

Product Data Sheets

CoolerMaster Model No. : ECC-00725-01-GP

Edition: A1

Issued Date: 09/10/14

Revision History :			
Date of Release	Revision No.	Description	
Customer		Cooler Master	
Approved by	DCC	Checked by	Drafted by
	邱資燕	甘雪暉	楊進林
Date:	Date:09/10/14	Date: 09/10/14	Date: 09/10/14



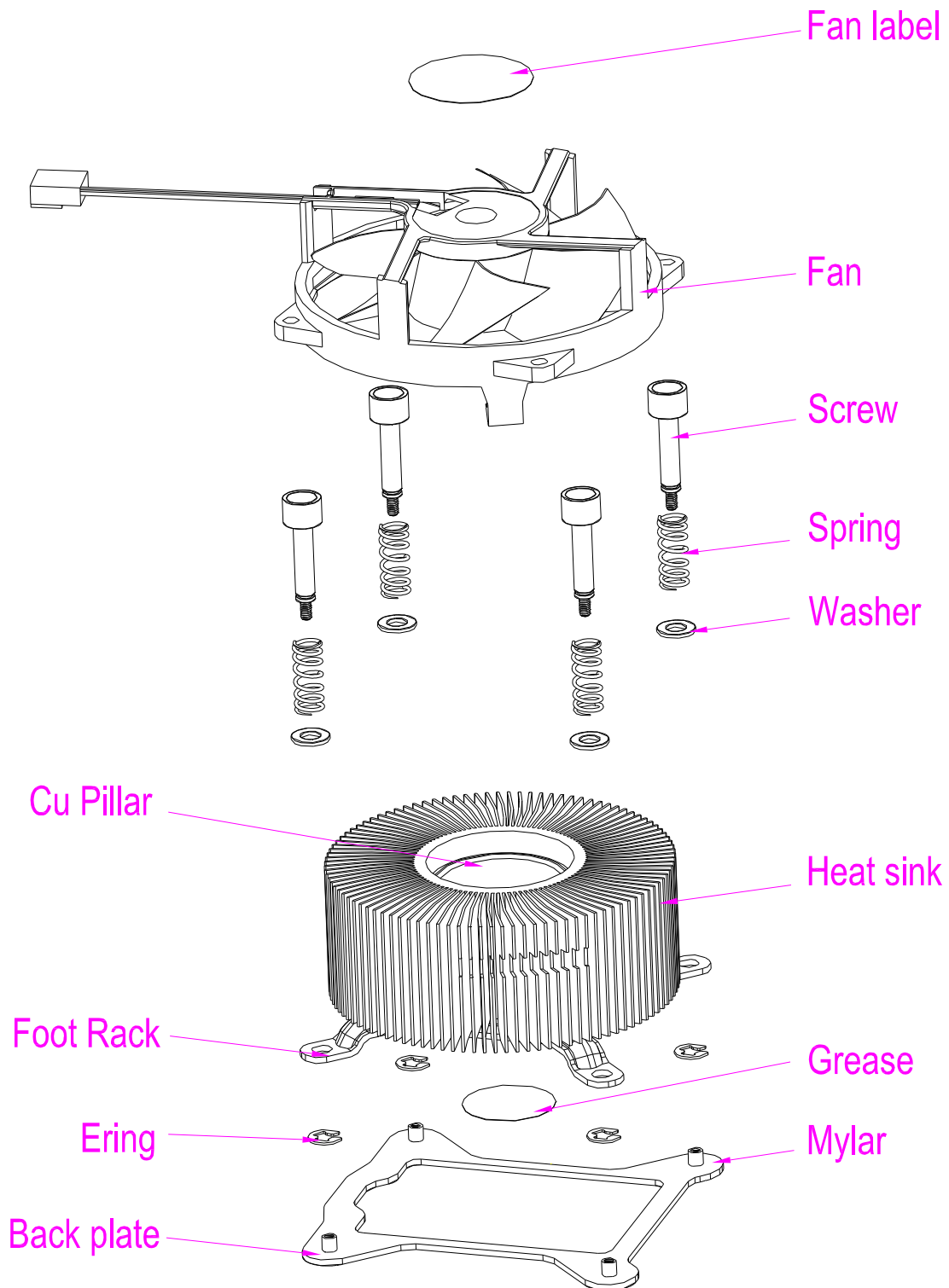
Cooler Master Co., Ltd.

TEL: +886 (2) 32340050 FAX : +886 (2) 32340051

www.coolermaster.com

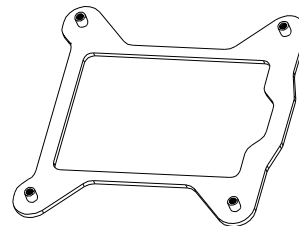
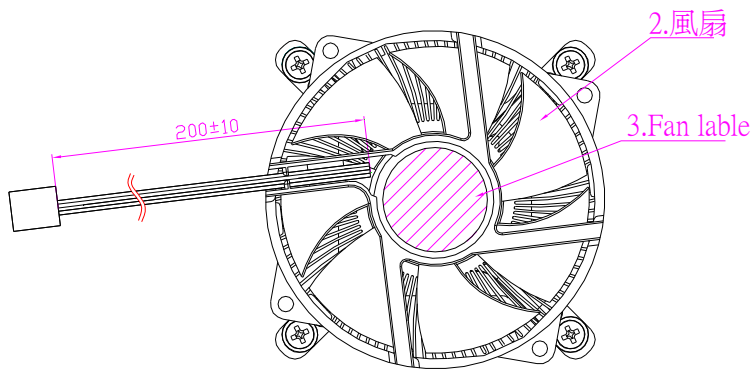


3. Explosion Drawing

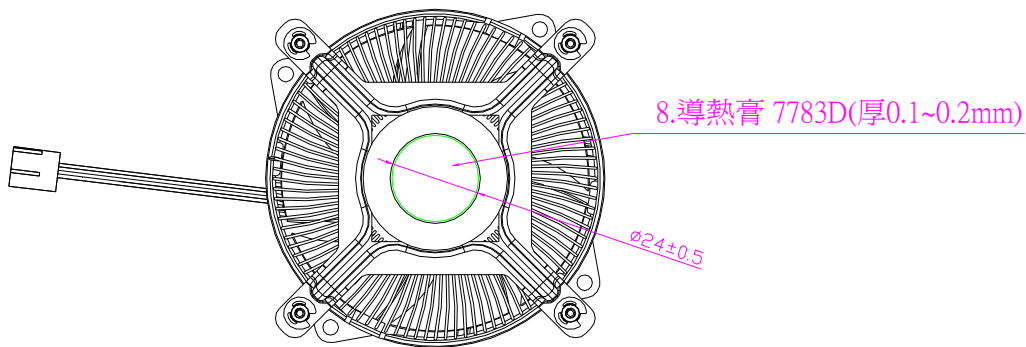
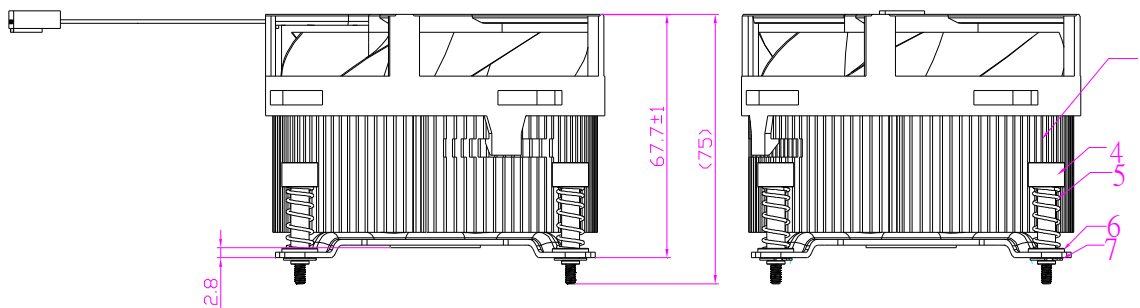




Assembly Drawing



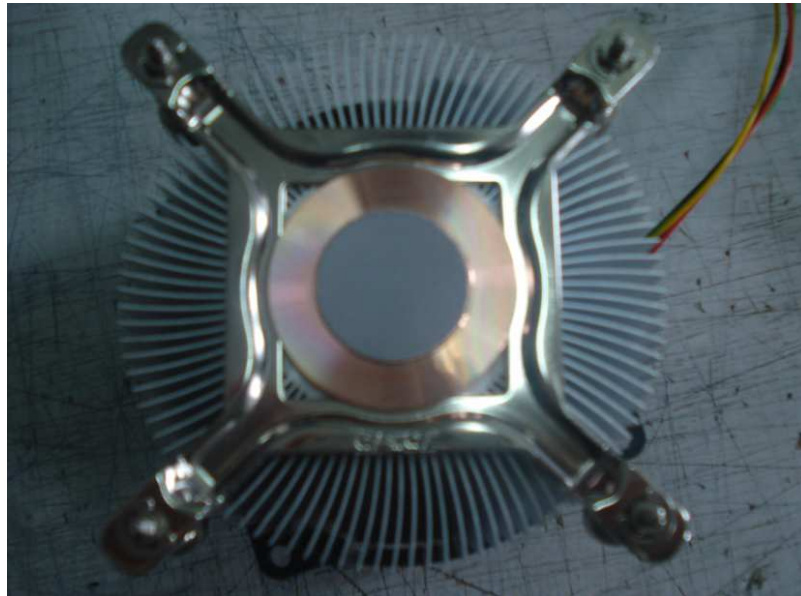
9. 背板/絕緣片做爲附件



- 1. Loading force:30-45LBF
- 2. The speed of fan after assembled to coolermasrer:3700-4500RPM



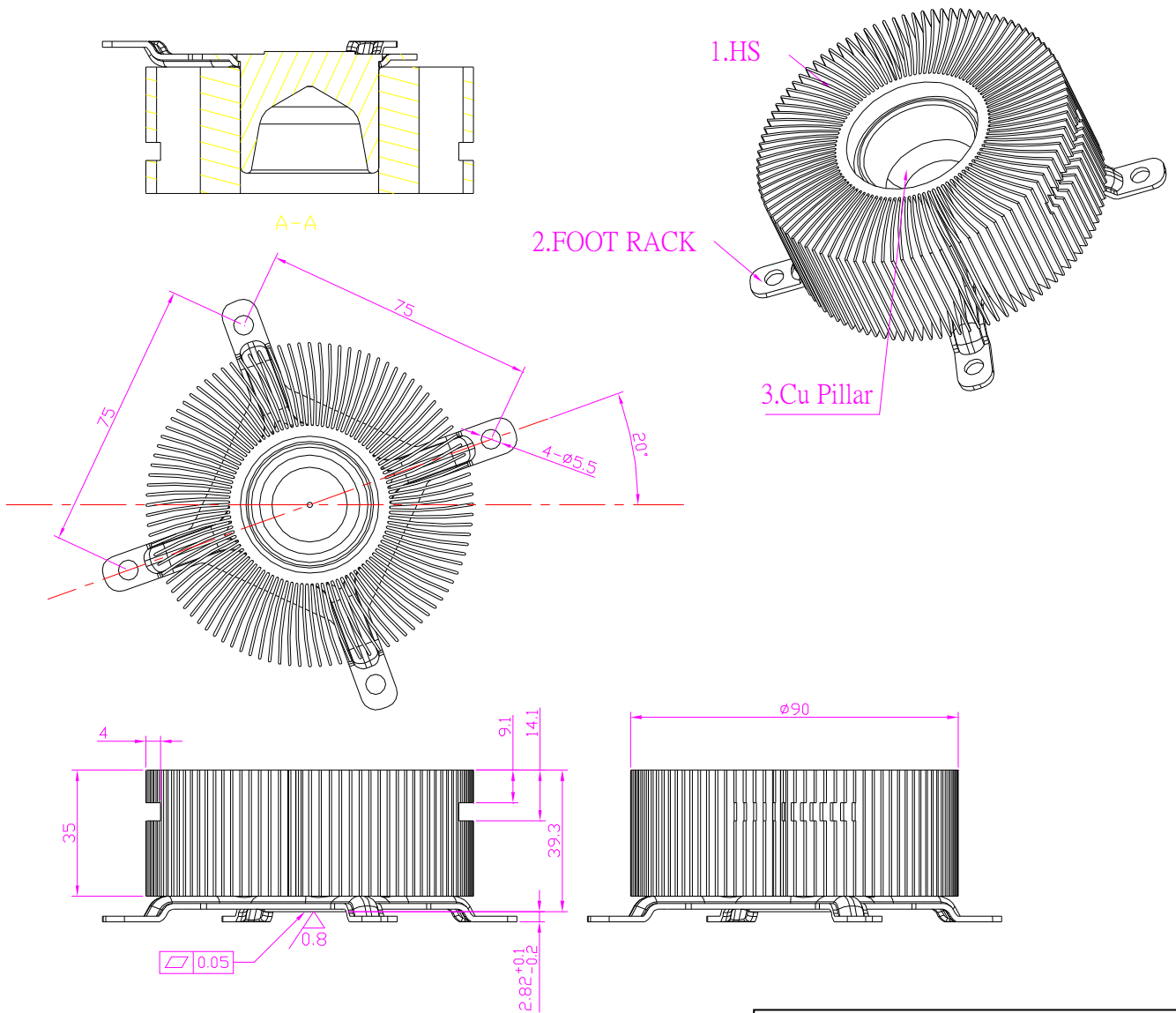
4. Product Photo





5. Specification & Drawing

Heat Sink Assembly



General Dimension Tolerances (Unit : mm)

0	—	30	± 0.2
31	—	60	± 0.3
61	—	100	± 0.4
101	and	Over	± 0.5
Angles			$\pm 2^\circ$



Heat Sink

Material : AL6063 T5

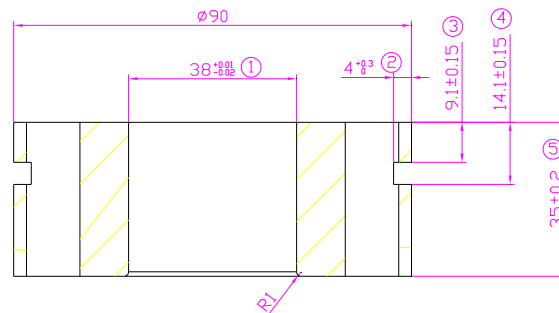
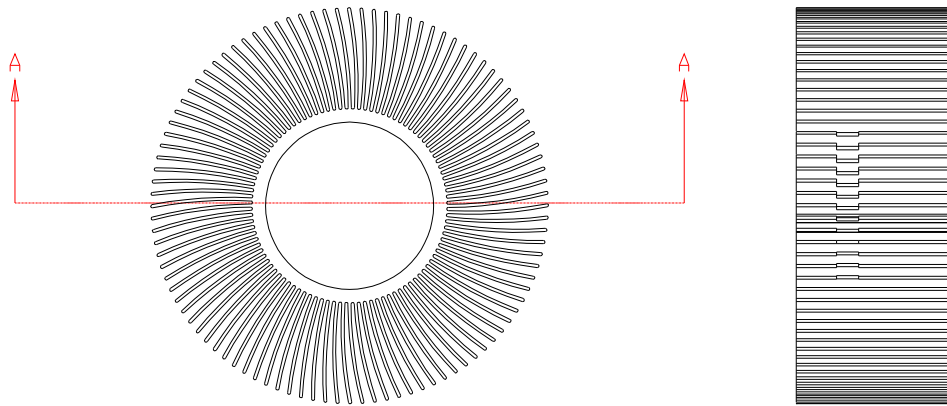
Finished:Chromate

Mechanical Characteristics :

Alloy No.	Tensile strength (kgf/mm ²)	Hardness test	Elongation (%)
Al6063 t5	27.23	68-75HV	31.12

Chemistry Ingredient Characteristics :

Value	Si	Fe	Cu	Mn	Cr	Mg	Zn	Ti
SPECIFIED VALUES	0.4258	02037	0.0032	0.0059	0.0028	0.5147	0.0000	0.00263



SECTION : A-A

General Dimension Tolerances (Unit : mm)			
0	—	30	± 0.2
31	—	60	± 0.3
61	—	100	± 0.4
101	and	Over	± 0.5
Angles			± 2°



Cu Pillar

Material: C1100

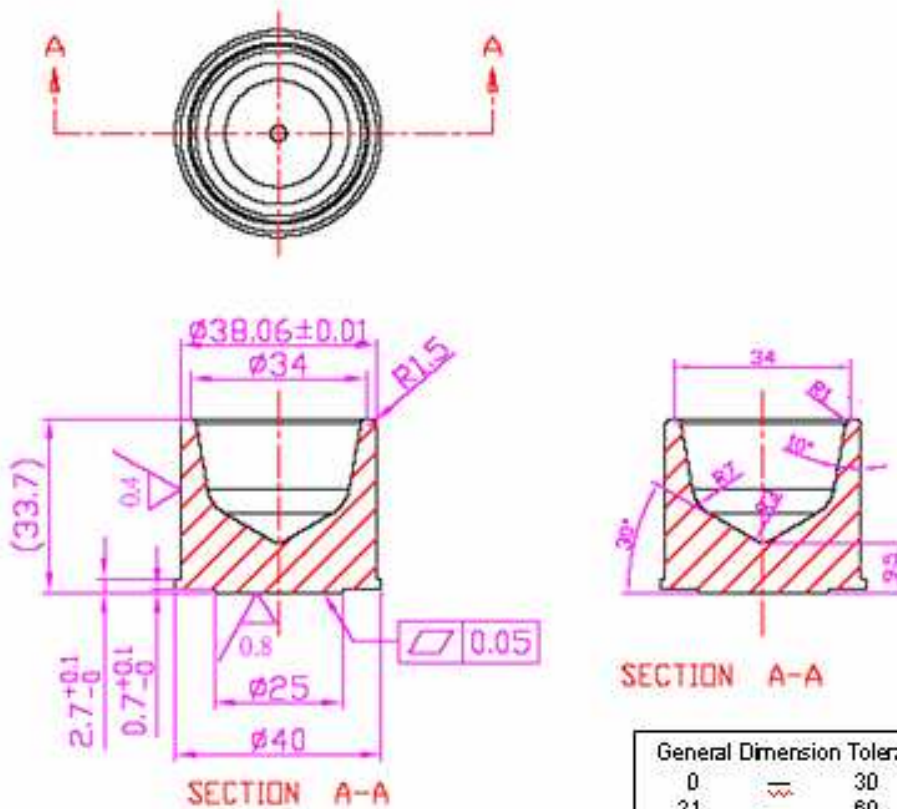
Surface Finishing: Anti-Oxidation

Mechanical Characteristics:

Alloy No.	Tensile strength	Hardness test	Elongation
C 1100	26.29 (kgf/mm ²)	88 HV	98.0 %

Chemistry Ingredient Characteristics:

Value	Cu	Pd	Fe	Sn	Zn	P
SPECIFIED VALUES	99.90	0	0	0	REN	0



General Dimension Tolerances (Unit : mm)			
0	—	30	± 0.2
31	≡	60	± 0.3
61	≡	100	± 0.4
101	and	Over	± 0.5
Angles			± 2'



Foot Rack

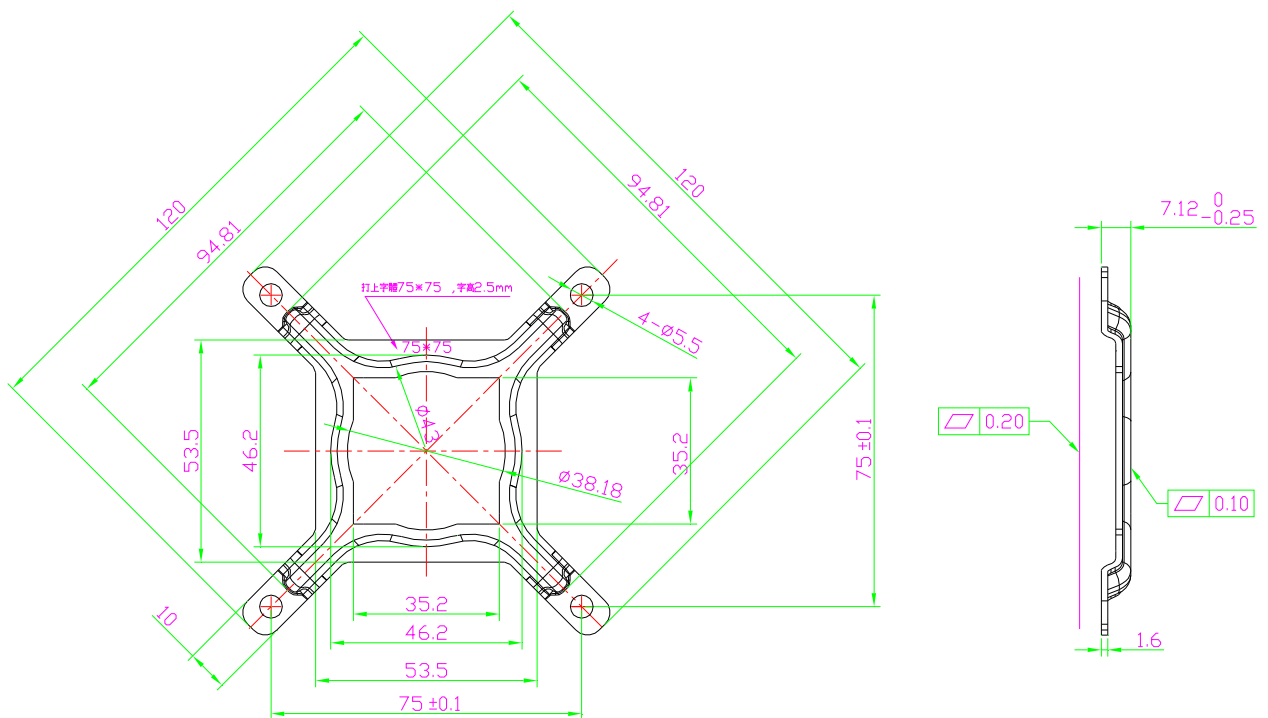
Material : S50C ; Finished: Nickel-Plating

Mechanical Characteristics :

Alloy No.	Tensile strength (26-32kgf/mm ²)	Hardness test (80~100HV)	Elongation (%)
S50C	26.29	88	98%

Chemistry Ingredient Characteristics :

Value	C	Si	Mn	P	S
SPECIFIED VALUES	0.52	0.21	0.72	0.015	0.004



General Dimension Tolerances (Unit : mm)			
0	—	30	± 0.2
31	—	60	± 0.3
61	—	100	± 0.4
101	and	Over	± 0.5
Angles			± 2°



Back Plate

Material : SPCC

Nut Material: SAE1215

Finished: Nickel-Plating

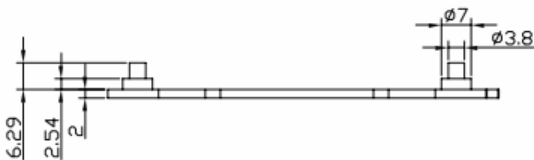
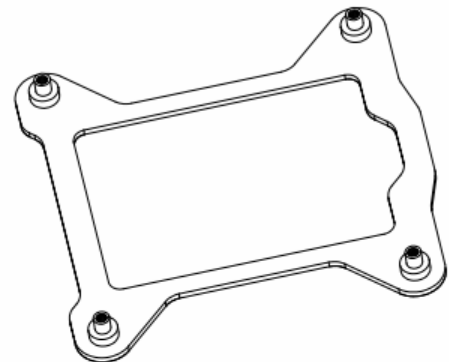
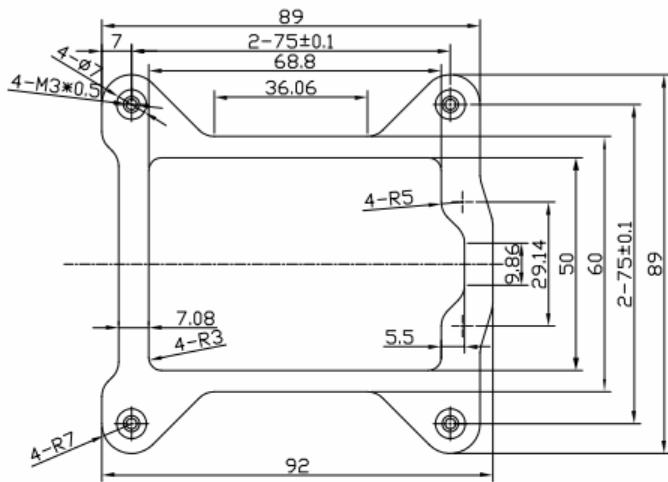
Thickness : 2.0mm

Mechanical Characteristics:

Specification	Tensile Strength (N/mm ²)	Yield Strength (N/mm ²)	Elongation (%)
SPCC	270	--	37

Chemistry Ingredient Characteristics:

Value	C	Si	Mn	P	S
SPECIFIED VALUES	0.15max	--	0.6max	0.1 max	0.05 max



General Dimension Tolerances (Unit : mm)

0	—	30	± 0.2
31	—	60	± 0.3
61	—	100	± 0.4
101	and	Over	± 0.5
Angles			± 2°



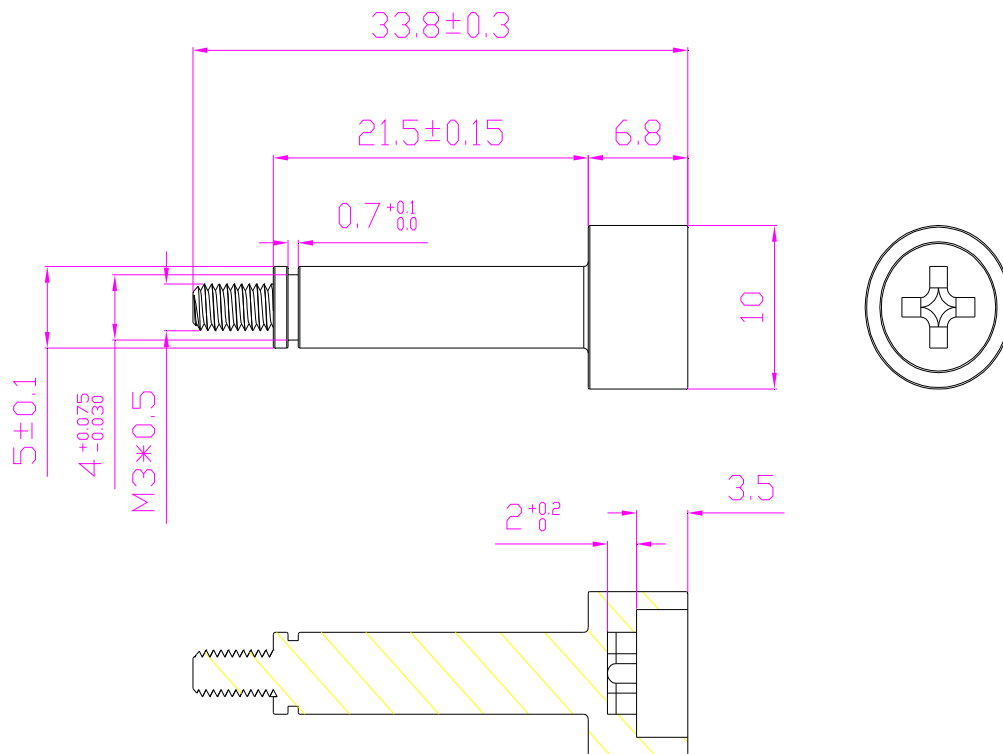
Screw

Material: AISI 1018

Finished: Nickel-Plated

Chemistry Ingredient Characteristics: (%)

Value	C	Mn	P	S
APPROXIMATE VALUES (%)	0.1	0.035	0.010	0.050



General Dimension Tolerances (Unit : mm)			
0	—	30	± 0.2
31	—	60	± 0.3
61	—	100	± 0.4
101	and	Over	± 0.5
Angles			$\pm 2^\circ$

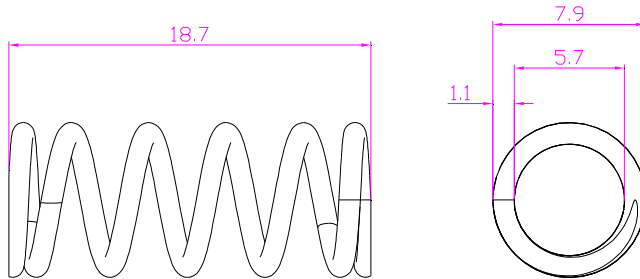


Spring

Mechanical Characteristics:

Specification	Size	Spring Constant
SWP	1.2mm	1390gf/mm

Finished: Nickel-Plated



General Dimension Tolerances (Unit : mm)			
0	—	30	± 0.2
31	—	60	± 0.3
61	—	100	± 0.4
101	and	Over	± 0.5
Angles			± 2°



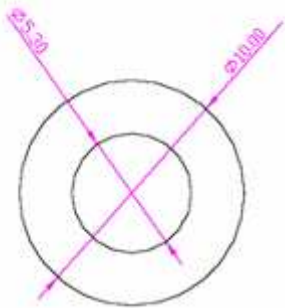
Washer

Material : SPCC

Surface treatment : Zinc-plating

Chemistry Ingredient Characteristics : (%)

Value	C	Mn	P	S	Si
SPECIFIED VALUES	0.15	0.6	0.1	0.05	/



0	30	± 0.2
31	60	± 0.3
61	100	± 0.4
101 and Over		± 0.5
Angles		$\pm 2'$



E-Ring

Material : SK5

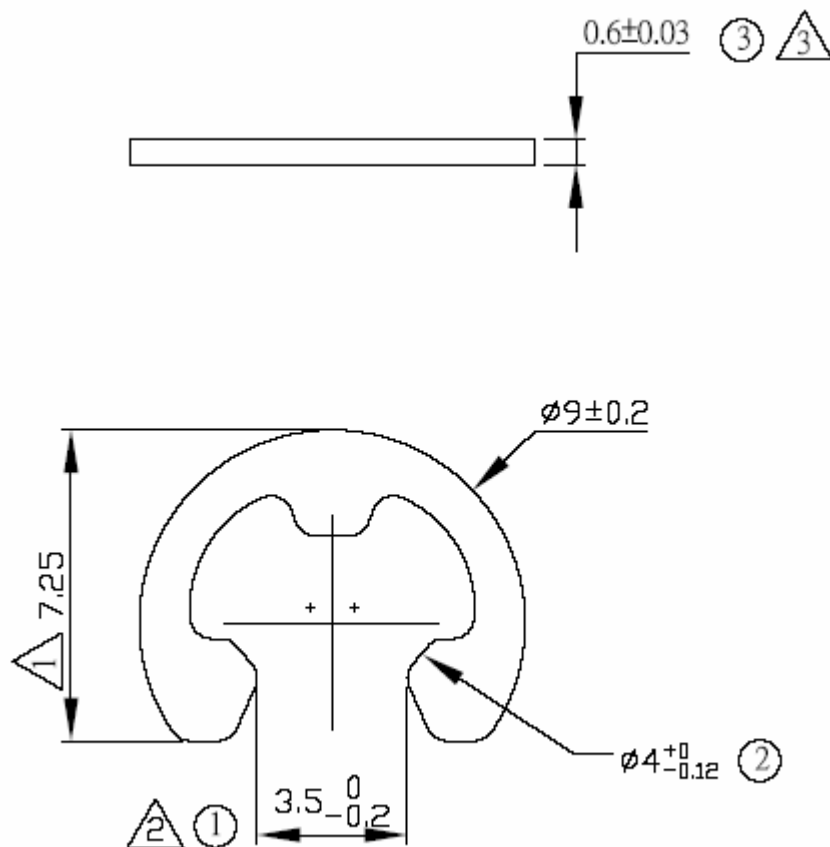
Surface Treatment : Nickel Plating

Mechanical Characteristics:

Specification	Hardness(HRC)	Hardness(HB)
SK5	45-50	201 max

Chemistry Ingredient Characteristics:

Value	C	Si	Mn	Cr	Ni
SPECIFIED VALUES	0.9-1.00	0.35 max	0.50 max	0.3 max	0.25 max



0	—	30	± 0.2
31	—	60	± 0.3
61	—	100	± 0.4
101	and	Over	± 0.5
Angles			$\pm 2^\circ$

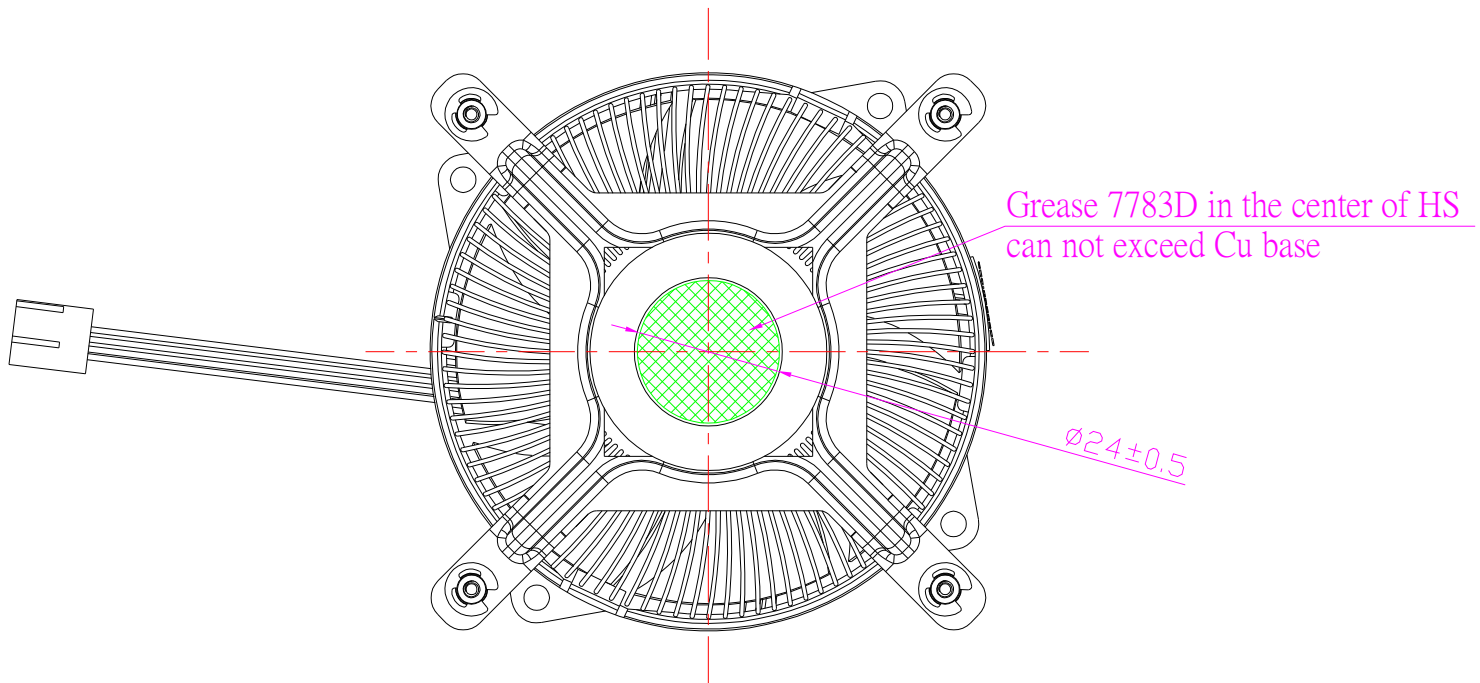


Interface

Size (mm) : $\Phi 24\text{mm}$

Thickness: 0.1~0.15mm

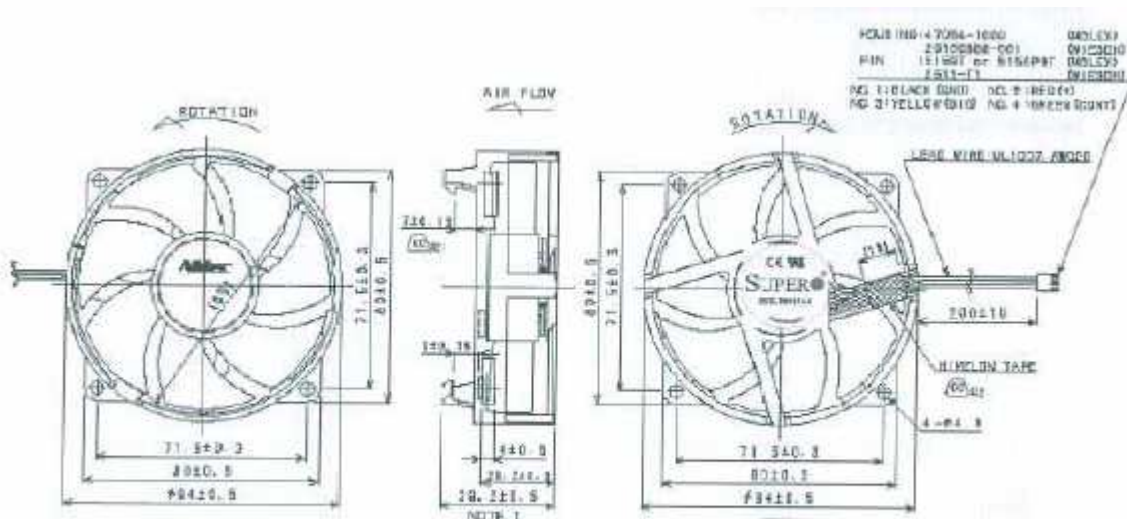
Specification	Brand
7783D	ShinEtsu





FAN

Nidec Part Number	A35551-35CLM
Dimensions	94x94x25.4mm
Rated Speed	4200RPM
Rated Voltage	12V DC
Input Current	0.44A(Max)
Input Power	5.28W(Max)
Acoustical Noise	45dB
MAX. Air Flow	42.73CFM
Bearing	2 Ball Bearing





8. Package



12PCS color box in carton
6 pcs in one layer
Total 2 layers in one carton
Total 12pcs/ctn

Carton size : 412*278*267
Gross weight : 9.132Kg